






Adam Hayes - East Finchley Office - Lettings 158 High Road, East Finchley, London, N2 9AS

Tel: 0208 883 2621 Email: info@adam-hayes.co.uk Web: www.adam-hayes.co.uk

Denison Close, East Finchley, N2 0JU

£2,100 PCM

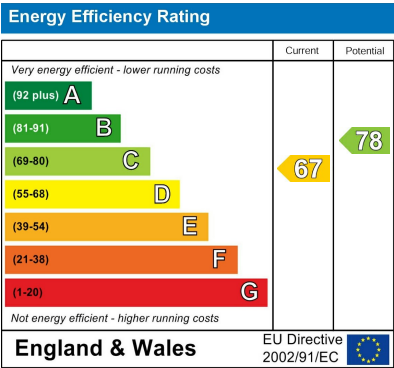
 2 Bedrooms  1 Bathrooms  1 Receptions

Key Features

- Two Bedroom Maisonette
- Modern Kitchen and Bathroom
- Balcony
- 15ft Reception
- Wooden Flooring

Other Information

Council Tax Band: D
Length of Tenancy: Long Let
Deposit: £2,420

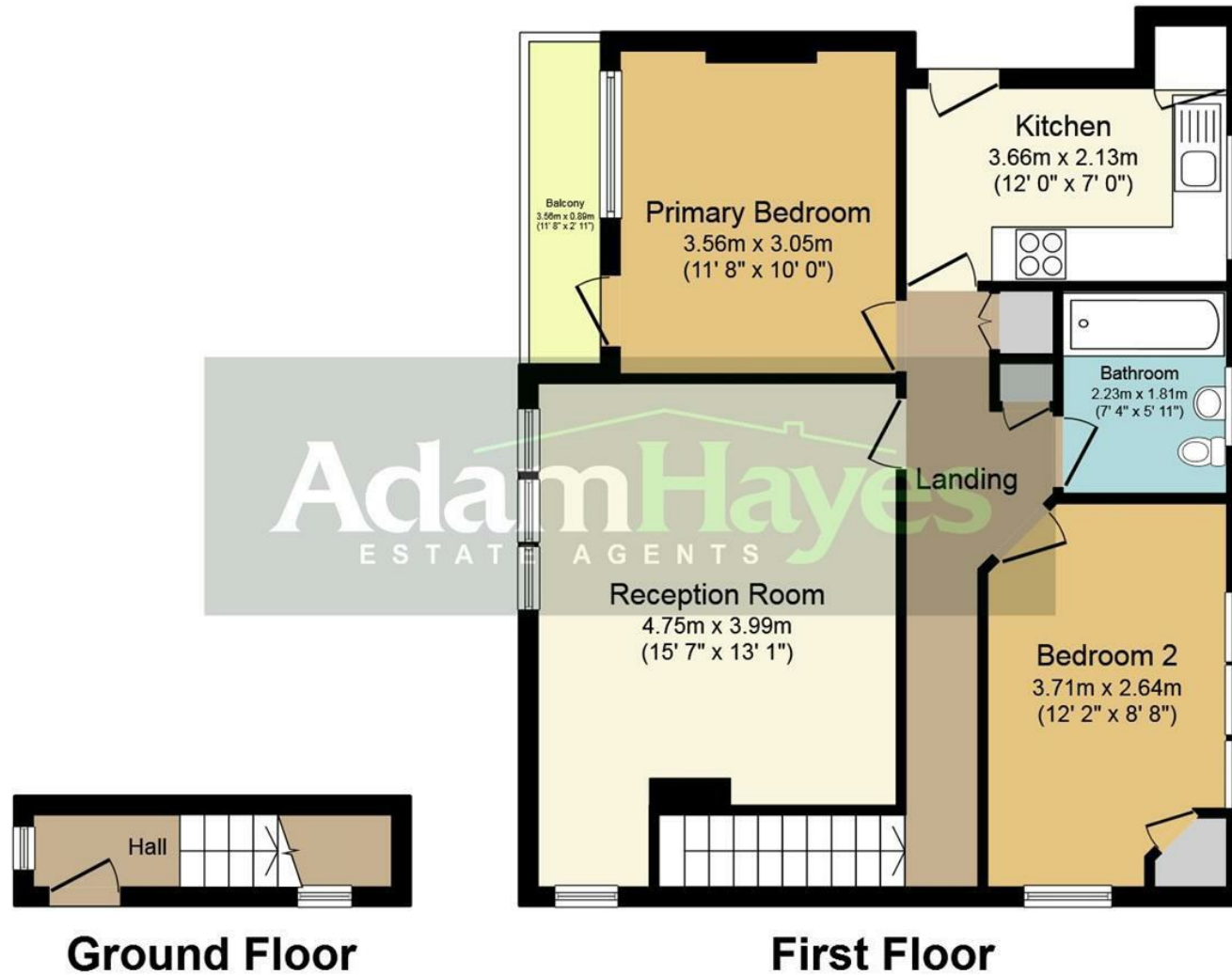


Nearest Stations

- East Finchley
- Finchley Central

Property Description

Conveniently located off Ossulton Way and within walking distance to local shops, transport facilities and amenities is this modern two double bedroom first floor purpose built maisonette with balcony. The property benefits from approximately 15ft reception, wooden flooring, a modern kitchen and bathroom and gas central heating. To really appreciate the size, condition and location an internal viewing is highly recommended.



Total floor area 68.8 sq.m. (741 sq.ft.) approx

This plan is for illustration purposes only and may not be representative of the property. Plan not to scale.

These particulars, whilst believed to be accurate, are set out as a general outline only for guidance and do not constitute any part of an offer or contract. Intending purchasers or prospective tenants should not rely on them as statements or representation of fact, but must satisfy themselves by inspection or otherwise as to their accuracy. We have not carried out a detailed survey, not tested the services, appliances and specific fittings. Room sizes should not be relied upon for carpets and furnishings. The measurements given are approximate. No person in this firm's employment has the authority to make or give any representation or warranty in respect of the property.